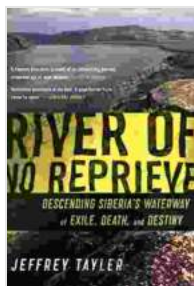


# Descending Siberia: A Waterway of Exile, Death, and Destiny



## River of No Reprieve: Descending Siberia's Waterway of Exile, Death, and Destiny by Jeffrey Tayler

★★★★☆ 4 out of 5

Language	: English
File size	: 3124 KB
Text-to-Speech	: Enabled
Screen Reader	: Supported
Enhanced typesetting	: Enabled
Word Wise	: Enabled
Print length	: 265 pages
Lending	: Enabled



The Lena River in Siberia is a waterway of exile, death, and destiny.

For centuries, the river has been used to transport prisoners to labor camps in the remote region. During the Soviet era, the Lena became a major artery of the ГУЛАГ, the vast network of forced labor camps that imprisoned millions of people.

The journey down the Lena was a harrowing experience. Prisoners were packed into overcrowded barges and forced to endure long days and nights of travel in squalid conditions. Many died along the way, from disease, starvation, or exposure to the elements.

Those who survived the journey arrived at their destination exhausted and broken. They were forced to work in harsh conditions, often in mines or

logging camps. Many died from overwork, malnutrition, or disease.

But the Lena River is also a symbol of hope and resilience. For many prisoners, the river represented a lifeline to freedom. They knew that if they could escape from the labor camps, they could follow the river north to safety.

In the years after the collapse of the Soviet Union, the Lena River has become a popular destination for tourists. Visitors come from all over the world to see the river and learn about its dark history. The river is also a reminder of the resilience of the human spirit and the power of hope.

## **The Lena River Today**

Today, the Lena River is a major transportation route in Siberia. It is also a popular destination for tourists and anglers. The river is home to a variety of fish, including salmon, sturgeon, and taimen.

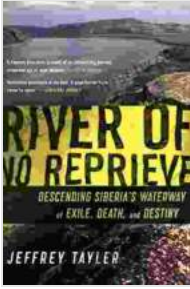
The Lena River is a beautiful and powerful river. It is also a river with a dark history. But the river is also a symbol of hope and resilience. It is a reminder of the human spirit's ability to overcome adversity.

## **Further Reading**

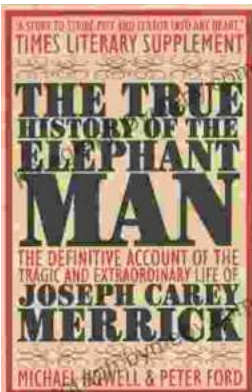
- [Lena River on Wikipedia](#)
- [Lena River Cruise on Lonely Planet](#)
- [Lena River Cruise on National Geographic](#)

**River of No Reprieve: Descending Siberia's Waterway of Exile, Death, and Destiny** by Jeffrey Tayler

★★★★☆ 4 out of 5

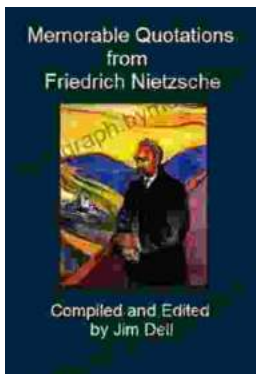


Language	: English
File size	: 3124 KB
Text-to-Speech	: Enabled
Screen Reader	: Supported
Enhanced typesetting	: Enabled
Word Wise	: Enabled
Print length	: 265 pages
Lending	: Enabled



## Unveiling the Truth: The Captivating Saga of The Elephant Man

Embark on a poignant journey through the extraordinary life of Joseph Merrick, immortalized as the "Elephant Man," in this meticulously researched and deeply affecting...



## Memorable Quotations From Friedrich Nietzsche

Friedrich Nietzsche (1844-1900) was a German philosopher, cultural critic, composer, poet, and philologist. His...